

# ANCHOR DIAMOND Group

*Products for the Residential Market*



**DREAM ~ CREATE ~ ENJOY**



# Easy installation is more than lip service.

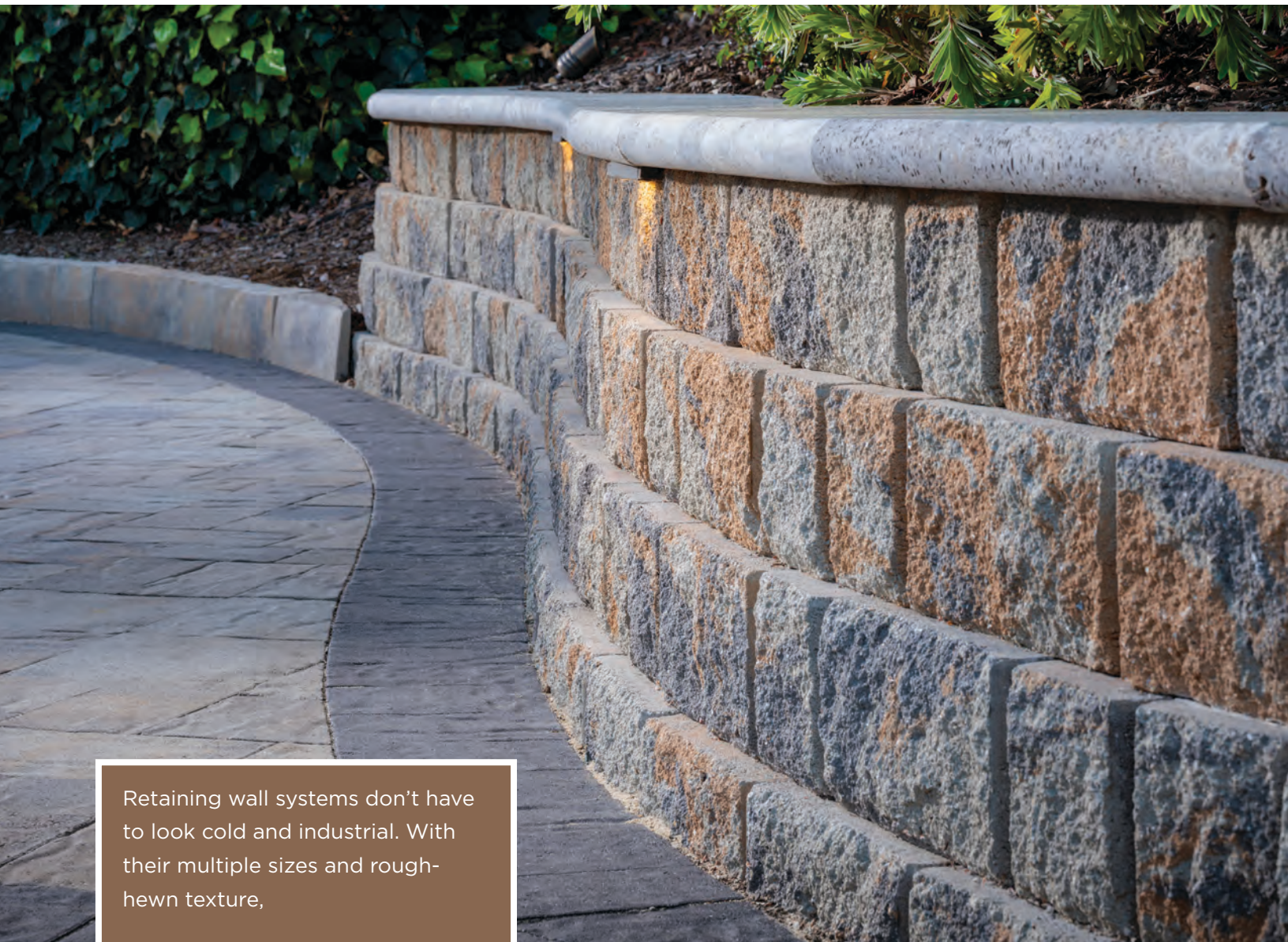


## **No pins. No mortar. No misalignments.**

Rear-lip block, invented by Anchor Diamond<sup>SM</sup>, makes installation fact and accurate. Anchor Diamond the original rear-lip product!







Retaining wall systems don't have to look cold and industrial. With their multiple sizes and rough-hewn texture,

Highland Stone<sup>®</sup> products blend beautifully with natural stonework.



## Create the natural landscape of your dreams.

If you're looking for a retaining wall system that combines superior strength with artistic beauty, look no further than the Highland Stone<sup>®</sup> retaining wall system. Crafted with a rich, textured appearance, this multipiece system perfectly complements any home or landscape, from majestic north woods to a tropical paradise.



# HIGHLAND STONE®

FREESTANDING WALL SYSTEM

---



## **Natural beauty that stands out in a crowd.**

From courtyards to patios, the multipiece Highland Stone® retaining and freestanding wall units are a perfect choice to create a functional, beautiful and natural-looking wall that can add a polished touch to any residential landscape.



The natural appearance and extraordinary versatility of Highland Stone® freestanding walls transform a traditional suburban yard into a truly unique landscape. Incorporate patios, rock gardens and pergolas to create a one-of-a-kind space.

## HIGHLAND STONE®





# DIAMOND® 10D

RETAINING WALL SYSTEM

---

The Diamond® 10D retaining wall system complements every landscape design.



## **Crafted with timeless quality.**

The dependability of the Diamond® retaining wall system has made it a preferred choice for decades. The Diamond 10D version has a distressed face that transitions nicely into the surrounding landscape.

The Diamond® 10D retaining wall system complements every landscape design.



Transform your front yard into a true garden landscape by using Aspen Stone® products to create classically elegant terraces, planters and walls up to 2 feet high.



## **Make your yard a work of understated art.**

Add a touch of elegant detail with Aspen Stone® retaining walls. The smaller, subtly detailed blocks are the perfect choice for planters and low terraces. Their proven quality ensures that your landscape will stand the test of time.



# DIAMOND<sup>®</sup>

RETAINING WALL SYSTEM

---



## **Dependability and timeless quality.**

The dependability of the Diamond<sup>®</sup> retaining wall system has made it a preferred choice for decades for small and large projects alike. Available in straight-split face shape or beveled face shape, providing clean lines and a tradition look for a wide-range of landscape projects.





## DIAMOND®

**The Diamond® retaining wall system complements every landscape design.**



# DIAMOND PRO STONE CUT®

RETAINING WALL SYSTEM

---



## Experience graceful strength.

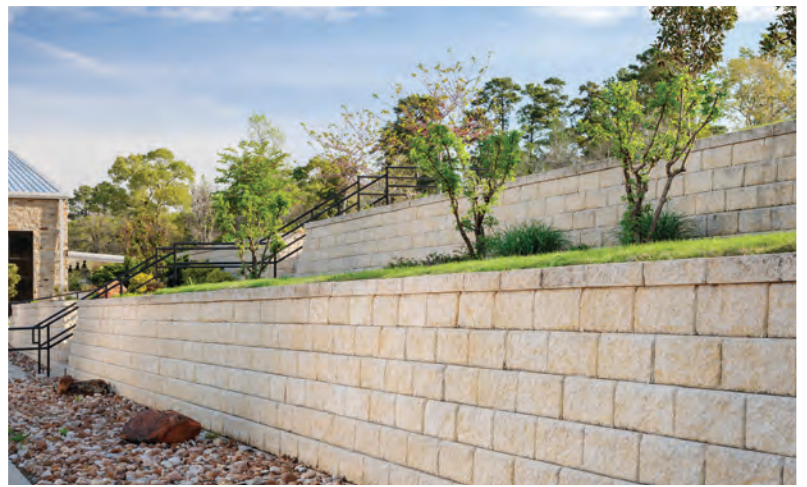
With the proven strength of the Diamond Pro® retaining wall system technology and a natural-stone appearance, Diamond Pro Stone Cut® products are the perfect choice for larger-scale projects that demand aesthetic beauty.





## DIAMOND PRO STONE CUT®

**The proven strength and natural beauty of the Diamond Pro Stone Cut® retaining wall system make it the perfect choice for a landscape that enhances the surroundings.**





# ANCHOR WALL SYSTEMS

PRODUCT LINE

**Highland Stone®**  
Retaining Wall System  
**6-INCH**

UNIT  
DIMENSIONS\*  
WEIGHT\*



**LARGE**  
6" X 18" X 12"  
78 LBS.



**MEDIUM**  
6" X 12" X 12"  
59 LBS.



**SMALL**  
6" X 6" X 12"  
30 LBS.

**Highland Stone®**  
Freestanding Wall System  
**6-INCH**

UNIT  
DIMENSIONS\*  
WEIGHT\*



**LARGE FRONT, 6" X 18" X 9"**  
**BACK, 6" X 16" X 9"**  
70 LBS.



**MEDIUM**  
6" X 12" X 9"  
6" X 10" X 9"  
45 LBS.



**SMALL**  
6" X 6" X 9"  
6" X 4" X 9"  
20 LBS.



**COLUMN**  
6" X 18" X 9"  
6" X 18" X 9"  
75 LBS.

**Diamond®**  
Retaining Wall System  
**6-INCH**

UNIT  
DIMENSIONS\*  
WEIGHT\*



**STRAIGHT FACE**  
6" X 17<sup>1</sup>/<sub>4</sub>" X 12"  
72 LBS.



**BEVELED FACE**  
6" X 15<sup>7</sup>/<sub>8</sub>" X 12"  
68 LBS.



**STRETCHER**  
6" X 17<sup>3</sup>/<sub>4</sub>" X 10"  
52 LBS.

**Diamond 10D**  
**Retaining Wall System**

\*Actual dimensions and weights may vary from these approximate values due to variations in manufacturing processes. Specifications may change without notice. Contact your Anchor representative for additional information.



**DIAMOND PRO**



# ANCHOR WALL SYSTEMS

PRODUCT LINE



## Diamond Pro Stone Cut®

Retaining Wall System  
**8-INCH**



UNIT  
DIMENSIONS\*  
WEIGHT\*

**STRETCHER**  
8" X 18" X 12"  
77 LBS.



**DIAMOND PRO® CAP**  
4" X 18" X 12"  
47 LBS.



**CORNER**  
8" X 18" X 9"  
101 LBS.

## Diamond and Highland Stone Accessories

For products



UNIT  
DIMENSIONS\*  
WEIGHT\*

**LARGE CAP**  
3" X 17<sup>1/4</sup>" / 12" X 10<sup>3/8</sup>"  
34 LBS.



**STEP**  
6" X 16" X 12"  
89 LBS.



**XL™ CAP**  
3" X 18" X 13"



**DIAMOND PRO REC CAP**  
4" X 18" X 12"

## Aspen Stone®

Retaining Wall System



UNIT  
DIMENSIONS\*  
WEIGHT\*

**STRETCHER**  
4" X 11<sup>5/8</sup>" X 7"  
22 LBS. 15 LBS.



**CAP**  
2<sup>3/8</sup>" X 12" X 7<sup>1/2</sup>"



**HIGHLAND STONE**



# COLOR GUIDE

## PRODUCT LINE

---

### Highland Stone®

- Fieldstone
- Prairie Blend
- Granite
- Brookstone
- \*Flint River (only available in Freestanding)

### Diamond® Bevel

- Natural Gray
- Buff
- Red

### Diamond® Straight®

- Natural Gray
- Buff
- Brown
- Tyger

### Diamond 10D®

- Fieldstone
- Prairie Blend
- Granite
- Brookstone

### Diamond Pro Stone Cut®

- Natural Gray
- Buff
- Fieldstone
- Prairie Blend
- Granite
- Brookstone
- Flint River

### Aspen Stone®

- Natural Gray
- Buff
- Fieldstone
- Prairie Blend
- Granite
- Brookstone
- Tyger
- Flint River

### Blended Colors



Fieldstone



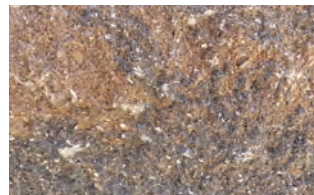
Prairie Blend



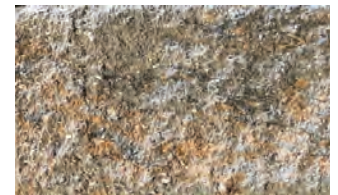
Tyger



Granite



Brookstone

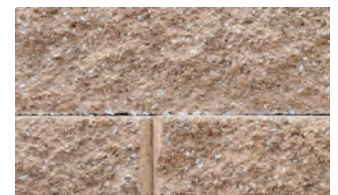


Flint River

### Solid Colors



Brown



Buff



Natural Gray



Red



# INSTALLATION

## GUIDELINES



To complete your project, you will need the following hand tools: carpenter's level, chisel, exterior-grade concrete adhesive, garden hose, gloves, hammer, pencil, safety glasses, shovel, square, stakes, string line, tape measure. You may also need a skid-steer loader, compactor, wheelbarrow and a circular cut-off saw with a masonry blade. Other requirements include a 4-inch-diameter perforated flexible polypropylene pipe (drain tile) a supply of compactible base material (3/4-inch minus aggregate with fines) and gravel (3/4-inch free-draining aggregate without fines) to use as backfill.

**1.** Use stakes or a garden hose to mark the wall's placement

**2.** Using a shovel or a skid-steer loader, dig a trench 12 inches wider than the block you are installing and 6 inches deeper than the height of the block.

**3.** Firmly compact the soil in the bottom of the trench. Lay 6 inches of compactible base material in the bottom of the trench and compact. Install base in 2-3 inch lifts. (Fig. A)

**4.** Place Torpedo® base blocks or the first layer of the Anchor units without lips on the prepared base (lips must be manually knocked off units before placement). (Fig. B) Position the units side by side, in full contact with the base, and check level in both directions using your carpenter's level. Use a string line along the back edge of block to check for proper alignment. Fill cores (if applicable) and backfill with base material.

**5.** Continue assembling additional courses by placing units in a staggered relationship to the course beneath (running bond), pulling each unit forward until secure. (Fig. C) NOTE: Use free-draining gravel to backfill each additional course as it is installed.

**6.** Place drain tile behind the wall at grade to allow water to drain from the backfill. (Fig. D) Daylight the drain tile through the wall at every low point or every 50 feet of wall length and around the ends of the wall. Backfill with free-draining gravel 12 inches behind the wall, in 6-inch layers. Fill cores (if applicable) and voids. Organic soil or clay-type soil is not recommended for backfill material.

**7.** Fill area behind gravel with soil. (Fig. E) Firmly compact backfill soil behind the wall. Repeat steps 4, 5, 6 and 7 until the wall reaches the desired height. (Fig. F) Do not compact directly on top of the units. For walls taller than product's maximum gravity wall height consult a qualified engineer for information concerning proper design, backfill and geosynthetic reinforcement.

**8.** You may need partial blocks. To split a block, use a hammer and chisel to score the block on all sides. Pound the chisel on the score line until the block splits. For a smooth edge use a circular cut-off saw with a masonry blade. Read the operating manual before using a saw. Always wear eye protection when splitting blocks.

**9.** Finish wall with caps by starting at the lowest elevation. Place cap units side by side. For radius walls you will need to cut caps to fit. Carefully place glue on the top course and then place caps. If not finishing with caps, glue the top wall course.

Refer to [anchorwall.com](http://anchorwall.com) for instructions on installing freestanding walls and special applications.

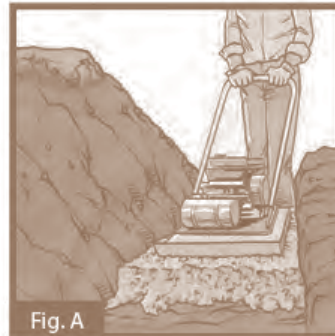


Fig. A

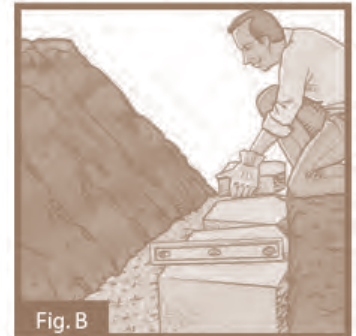


Fig. B

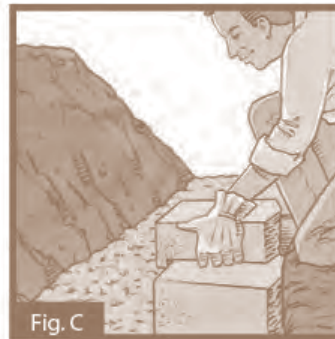


Fig. C



Fig. D

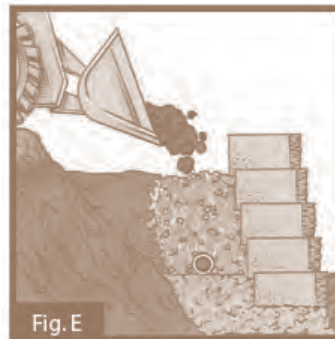


Fig. E

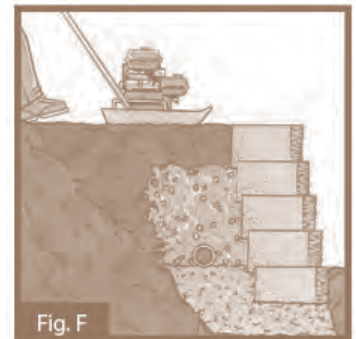


Fig. F





**ANCHOR**  
DIAMOND™



## PRODUCTS FOR THE RESIDENTIAL MARKET

ANCHOR DIAMOND Group  
5909 Baker Rd. Suite 550  
Minnetonka, MN 55345  
☎ 1-952-933-8855



**PEERLESS**  
BLOCK BRICK STONE HARDSCAPE

[www.peerlessblock.com](http://www.peerlessblock.com)

For more info visit  
[AnchorDiamond.com](http://AnchorDiamond.com)



©2024 ANCHOR DIAMOND Group All rights reserved.