

# ROSETTA<sup>®</sup>

B Y P E E R L E S S



# IDEA BOOK





# Change Your View

At Rosetta Hardscapes, we recognize that getting your dream outdoor living space is about more than what products you'll use. It's about imagining how your outdoor living space will transform your lifestyle.

When you choose Rosetta Hardscapes as the backdrop for the experiences you crave, it's easy to get both the natural stone aesthetics you want and the peace of mind you need from a cleverly engineered system.

The use of wetcast concrete elevates the look of Rosetta Hardscapes beyond that of the typical drycast concrete product. Rich textures crafted from real stone create a beautiful, natural atmosphere for your outdoor living.

Plus, the wealth of technical resources and detailed installation guides mean your contractor can bring your ideas to fruition faster than with natural stone. You'll be relaxing in your new Rosetta space before you know it!

Explore this idea book and start imagining more than just your new outdoor living area—start dreaming about your new lifestyle. Let us help you slow down, laugh a little more, and linger with the ones you love.

Let us help you change your view.



# Countertops

# 06 IMAGINE

- Ideas to Dream About
- Patios
- Outdoor Kitchens
- Front Entrances
- Walkways
- Stairways
- Retaining Walls
- Freestanding Walls
- Shoreline Protection
- Garden Walls
- Pillars & Columns
- Fire Pits
- Water Features
- Pools

# 36 PLAN

- Select Your Contractor
- Establish Your Budget
- Overcoming Challenges
- Pick Priorities & Establish Phases
- Select Your Style
- Timeless
- Contemporary
- Rustic

# 50 INSTALL

- How it Works

# 54 ENJOY

# 58 COLOR SWATCHES

# 60 WARRANTY



**Products shown:**  
Outcropping



# IMAGINE

## *Open up the possibilities*

When you first get started thinking about how you'll change your yard, it's not the time to limit yourself. Open up the possibilities of how you'd like to use your space, and let your imagination run free.

Find inspiration from social media, magazines, or better yet, from your own life experiences. Recall what makes dining al fresco at your favorite restaurant so special or why your kids loved the pool at the resort so much on your last vacation. What elements can you bring home?

The bigger your wishlist becomes, the more you'll be able to envision how your space could be transformed in the long run, even if it's not all part of your budget from the get-go.

Think about your answers to the following five questions, and then peruse the following pages to find your inspiration!

# Ideas to Dream About



**Products shown:**  
Belvedere Column, Column Cap, Dimensional  
Flagstone



**Products shown:**  
Irregular Steps, Outcropping



**Products shown:**  
Belvedere Fire Pit,  
Belvedere Wall,  
Dimensional Flagstone



**Products shown:**  
Belvedere Wall,  
Belvedere Coping,  
Dimensional Steps

A  
Belvedere Fire Pit,  
Belvedere Column,  
Column Cap, Dimensional  
Coping, Grand Flagstone

B  
Belvedere Column,  
Belvedere Wall, Column  
Cap, Dimensional Coping,  
Dimensional Flagstone,  
Superior Steppers

C  
Belvedere Fire Pit, Grand  
Flagstone



# Patios

The key to bringing the lifestyle you love outdoors is a patio. The central element to most hardscaping projects, a patio is the ideal place to entertain your closest friends, sip your morning coffee, and relax after a hard day's work. So, pave a place with personality. Once you have, you'll wonder how you ever lived without it!

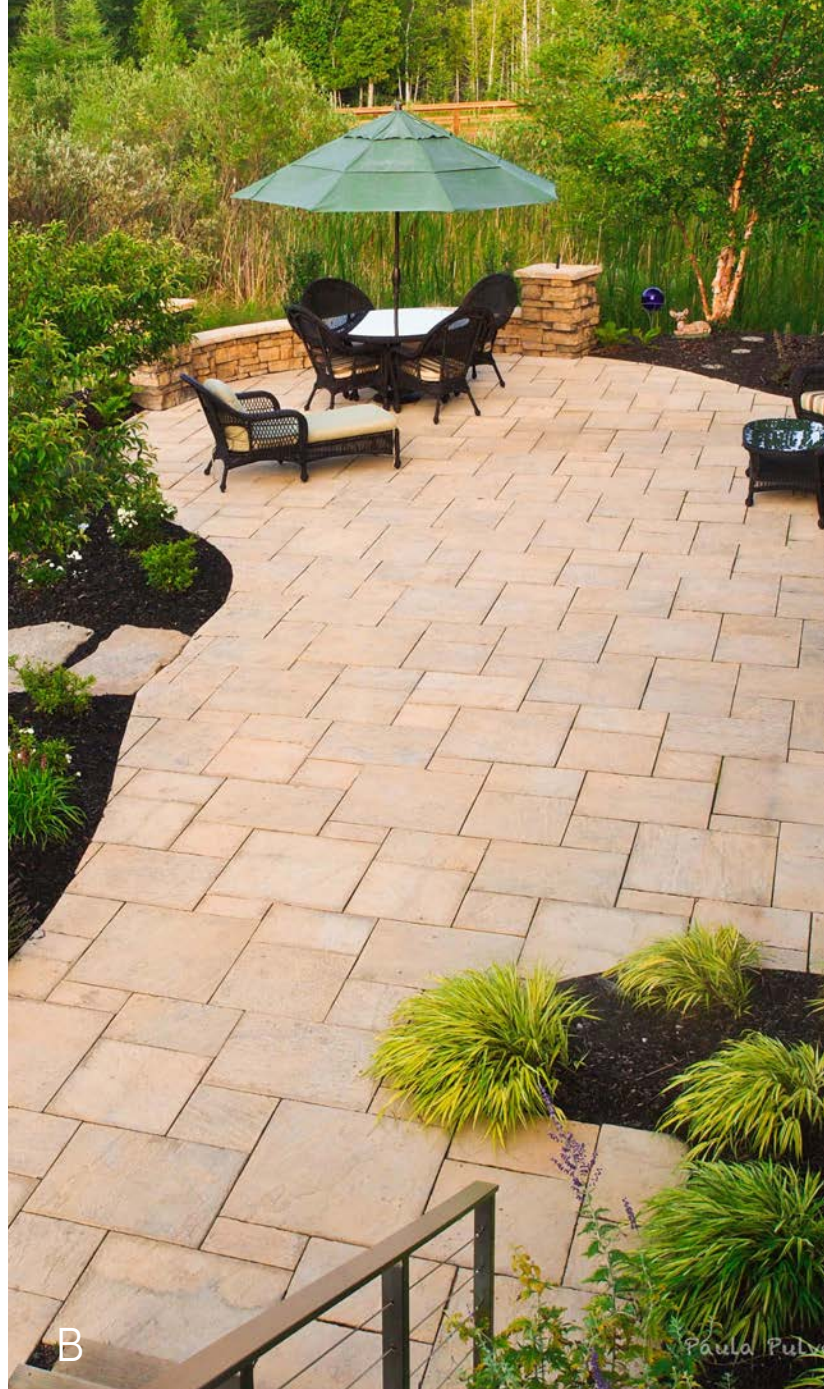
Find more ideas at  
[RosettaHardscapes.com/Patios](https://RosettaHardscapes.com/Patios)

## COLOR OPTIONS



SM

SB



A  
Belvedere Wall, Grand  
Flagstone

B  
Kodah Wall

C  
Belvedere Wall



# Outdoor Kitchen

Excellent landscape design is like a perfect recipe. When the flavors of each ingredient mix and merge, it delights everyone you share it with. When Rosetta Hardscapes products come together in perfect proportions for your outdoor kitchen, all you'll need to get cooking is the grill.

Find more ideas at  
[RosettaHardscapes.com/Kitchens](https://RosettaHardscapes.com/Kitchens)

## COLOR OPTIONS



SM

SB



B



C

A  
Belvedere Wall,  
Belvedere Coping,  
Dimensional Flagstone

B  
Irregular Steps

C  
Heartwood



# Front Entrances

The front entrance of your home says hello before you get the chance to even open the door. Make that silent hello welcoming by adding a little texture, a little tone, and a lot of love. It's the first impression your home will make, so spruce it up with coordinating elements like pillars, flagstone walkways, and planter boxes.

Find more ideas at  
[RosettaHardscapes.com/FrontEntrances](https://RosettaHardscapes.com/FrontEntrances)

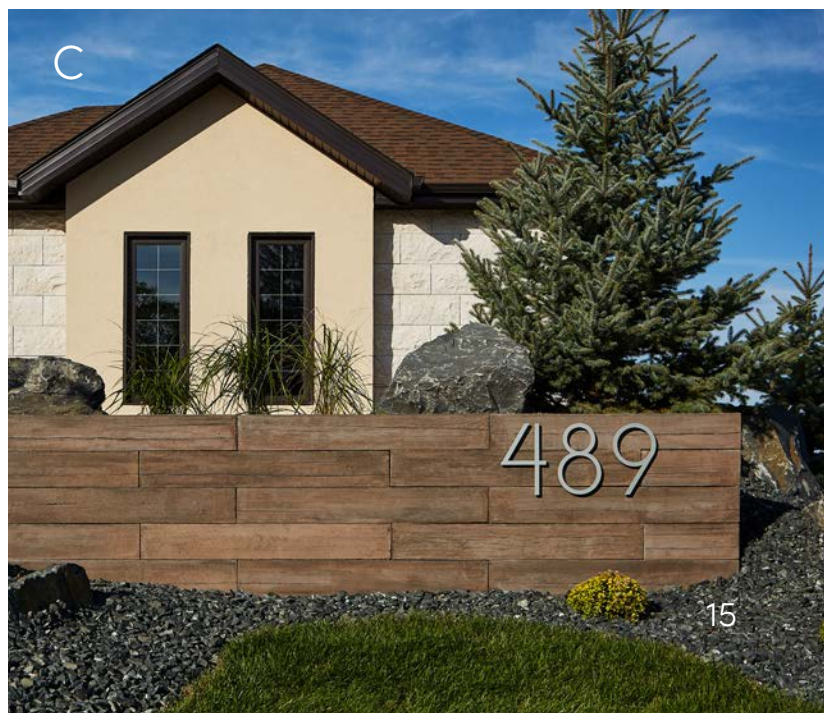
## COLOR OPTIONS



SM



SB



A  
Dimensional Flagstone

B  
Superior Steppers

C  
Grand Flagstone







# Walkways

Looking for an alternative to a plain sidewalk? Walkways created with Rosetta will help you add a little more pep in your step and style to your swagger. Lead guests to the waters edge or welcome the kids home from school with a path that suits your purpose.

Find more ideas at [RosettaHardscapes.com/Walkways](https://RosettaHardscapes.com/Walkways)

## COLOR OPTIONS



SM

SB

A  
Dimensional Steps, Kodah  
Wall

B  
Dimensional Steps

C  
Irregular Steps





B



C

# Stairways

Go ahead, take their breath away. Not from fatigue, but with the beauty of your stairway. Concrete steps from Rosetta have the look of natural stone with the consistent run and rise of an engineered product, providing an aesthetic alternative to boring backyard steps.

Find more ideas at [RosettaHardscapes.com/Steps](https://RosettaHardscapes.com/Steps)

## COLOR OPTIONS



SM



SB

A  
Grand Ledge

B  
Outcropping

C  
Belvedere Fire Pit,  
Dimensional Coping,  
Dimensional Steps, Kodah  
Wall



# Retaining Walls

When a grade change is hindering your ideal outdoor scenario, a retaining wall can help create the flat space you need. Whether you want to terrace a hillside, make space for a patio, or build a driveway, Rosetta Hardscapes can get the job done without detracting from the rest of your landscaping. That wall might even be the most-loved aspect of your project when it's all said and done.

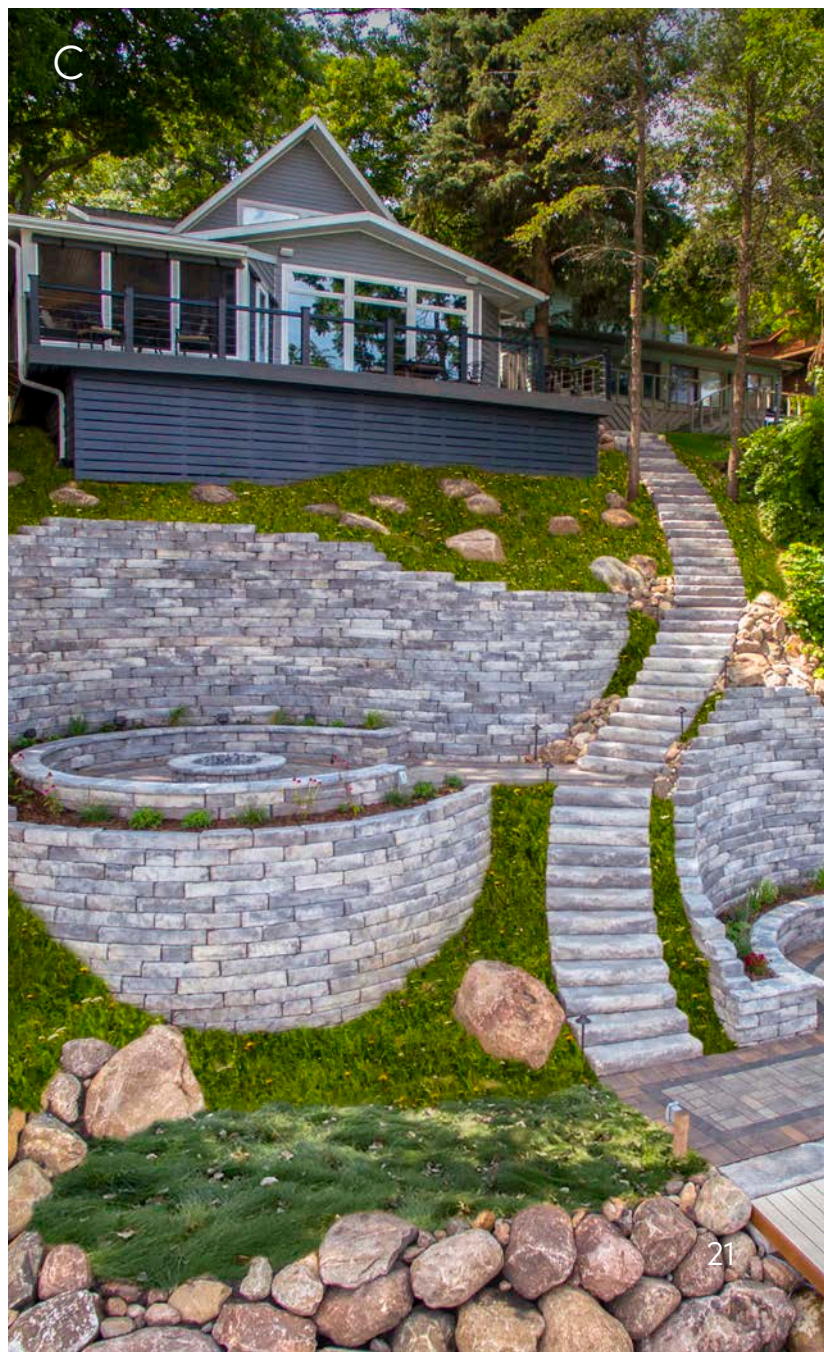
Find more ideas at  
[RosettaHardscapes.com/Walls](https://RosettaHardscapes.com/Walls)

## COLOR OPTIONS



SM

SB



A  
Belvedere Column,  
Belvedere Fire Pit,  
Belvedere Wall, Dimensional  
Cap, Dimensional Coping,  
Grand Flagstone

B  
Kodah Wall,  
Dimensional Flagstone

C  
Kodah Wall,  
Dimensional Flagstone





# Freestanding Walls

Freestanding walls add height to your hardscapes, but they also heighten the experience you have in your yard. They create space for intimate fireside chats, frame amazing outdoor living areas, and build beautiful barriers. With texture on two sides, freestanding walls create the best of both worlds - whether you're on the inside looking out or the outside looking in.

## COLOR OPTIONS



SM

SB

A  
Outcropping

B  
Outcropping

C  
Outcropping





# Shoreline Protection Walls

The dynamic movement of water is part of what makes living along the lake so desirable. But, that same wave action can lead to unsightly erosion and an unsettling feeling. With Rosetta shoreline protection walls, you can get back to enjoying the beauty of the beachfront rather than worrying what the water might do to your property.

## COLOR OPTIONS



SM

SB



A  
Heartwood

B  
Belvedere Wall

C  
Belvedere Coping,  
Belvedere Wall



# Garden Walls

Whether a stand-alone planter box or a terraced retaining wall system, fashion and function blend perfectly with garden walls by Rosetta Hardscapes. The natural colors and textures of real stone and wood highlight your hardscaping, while making the plants in your softscaping pop!

Find more ideas at  
[RosettaHardscapes.com/GardenWalls](https://RosettaHardscapes.com/GardenWalls)



A  
Belvedere Column,  
Belvedere Fire Pit,  
Belvedere Wall, Belvedere  
Cap, Dimensional Coping,  
Grand Flagstone

B  
Belvedere Column

C  
Belvedere Column,  
Dimensional Coping,  
Dimensional Flagstone



# Pillars & Columns

Whether you designate your driveway with coordinating columns, perch plants on your patio columns, or build a pergola atop pillars that match your wall, it's the details that round out your landscaping. These finishing touches provide the perfect start to enjoying outdoor living.

Find more ideas at  
[RosettaHardscapes.com/PillarsandColumns](https://RosettaHardscapes.com/PillarsandColumns)

## COLOR OPTIONS



SM

SB



B



C

A  
Belvedere Fire Pit  
Grand Flagstone

B  
Belvedere Wall,  
Dimensional Column Cap,  
Dimensional Coping,  
Dimensional Flagstone

C  
Belvedere Wall, Dimensional  
Coping, Kodah Fire Pit,  
Outcropping



# Fire Pits

It's a no-brainer. With easy-to-install outdoor fire pits that look like natural stone, why wouldn't you bring a little flicker into the fold of your backyard? Available with both a wood-burning and gas conversion kit, you'll be lured into spending "s'more" time outdoors.

Find more ideas at  
[RosettaHardscapes.com/Firepits](https://RosettaHardscapes.com/Firepits)

## COLOR OPTIONS



SM

SB



B



C



A  
Dimensional Steps,  
Kodah Wall

B  
Dimensional Coping,  
Dimensional Column Cap,  
Kodah Wall with Kodah Corners

C  
Outcropping





# Water Features

From fountains to waterfalls and everything in between, the fluidity of water will provide a balance point to other aspects of your landscape... and your life. Find your zen as you allow the sound, sight and feel of moving water to mesmerize you.

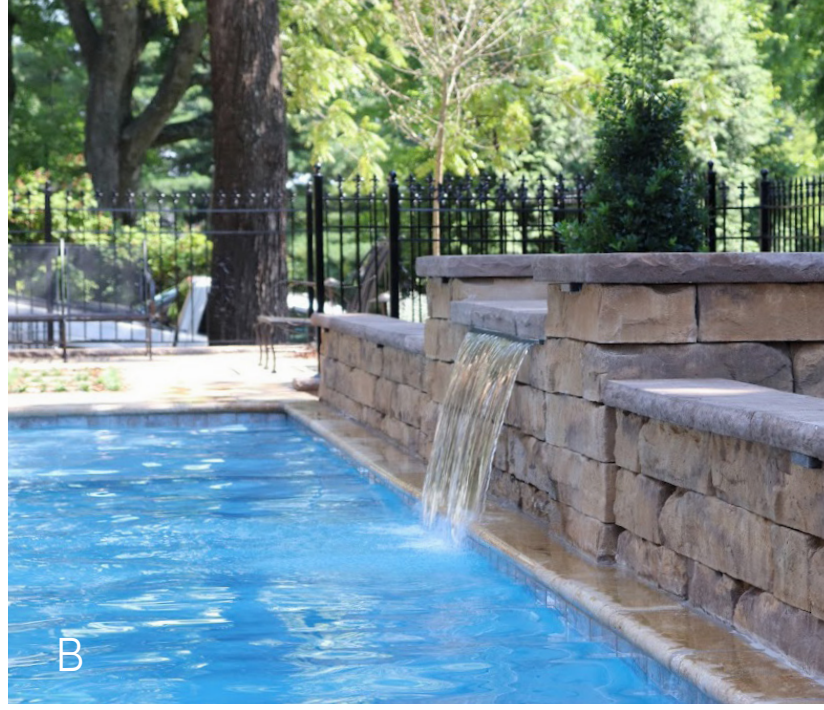
Find more ideas at  
[RosettaHardscapes.com/Waterfeatures](https://RosettaHardscapes.com/Waterfeatures)

## COLOR OPTIONS



SM

SB



A  
Outcropping

B  
Belvedere Wall, Bullnose  
Coping, Grand Flagstone

C  
Irregular Steps, Outcropping



# Pools

The pool deck is your family's warm-weather home, and Rosetta products are as perfect for pools as your kids are for water. While the kids are making a splash in the pool, you can make a splash with your hardscape elements.

Find more ideas at  
[RosettaHardscapes.com/Pools](https://RosettaHardscapes.com/Pools)



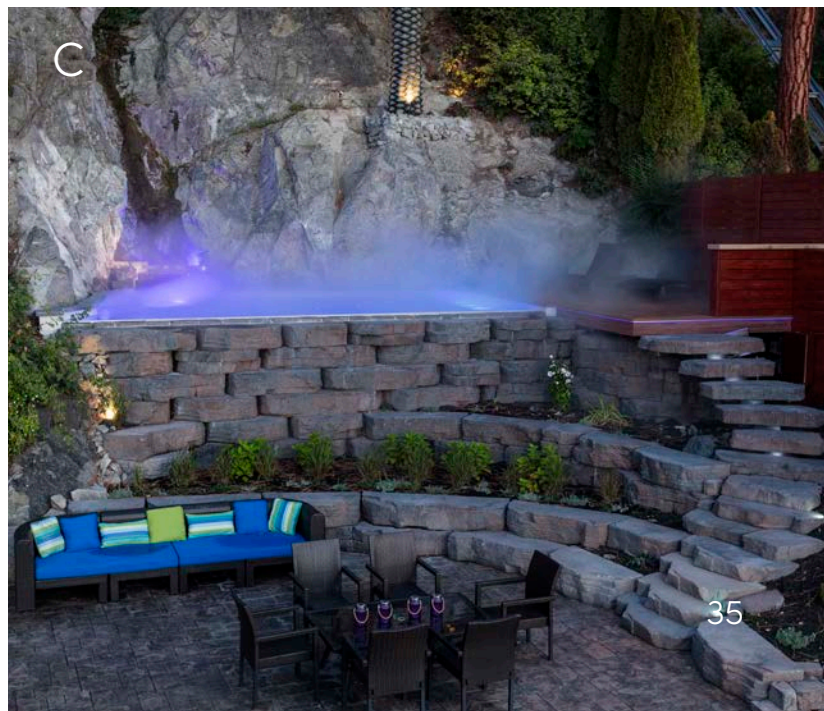
B

## COLOR OPTIONS



SM

SB



C



**Products shown:**  
Dimensional Flagstone

# PLAN

## *Narrow in on the scope*

After you've allowed your imagination to run free, it's time to narrow in on the scope of your project and pick your priorities. There are a few steps in the planning process that will help your end result meet your expectations.



# 1

## Select Your Contractor

Finding the right professional to help you through the rest of the process is paramount to your project's success. Ask friends, family, and neighbors if they have any recommendations and do some online research of your own.

While a good reputation goes a long way, it's not the only factor you should use to make your decision.

- Are they fully licensed and insured?
- Does their style match your preference?
- Does their timeline work for you?

Ultimately, meet with a couple of contractors to see who you trust. This is a significant investment in your home and lifestyle, so finding someone who will help you enjoy the process is key.



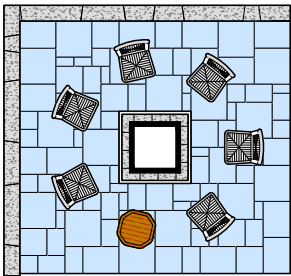
# 2

## Establish Your Budget

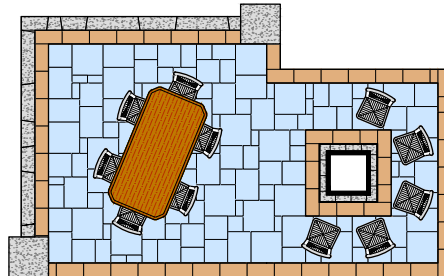
Determining your budget early on in the process is a must. For some, this answer will be straight forward, but for others, it might take you a while to find your comfort level when it comes to spending.

And, remember up to 80% of your total project cost can be an investment in the labor to bring your vision to fruition. Around 20% will be the cost of hardscape products. So, make sure you select the highest quality products you can afford so that you're happy with them for the long term.

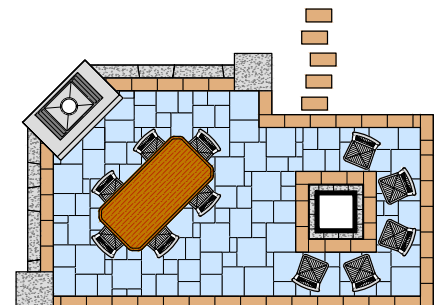
If you need a starting point, the [Pre-Planned Patio Guides](#) provide a ballpark for you to get the conversation going with your contractor.



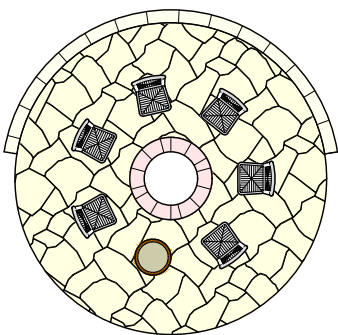
200 Square Feet



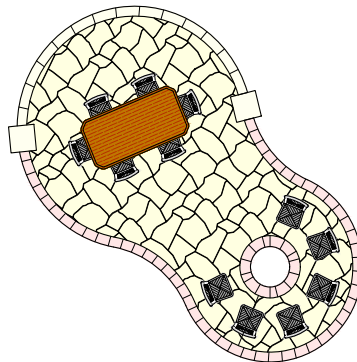
400 Square Feet



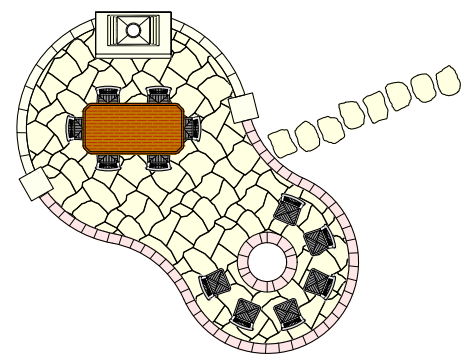
400 Square Feet



250 Square Feet



425 Square Feet



425 Square Feet

# 3

## Overcoming Challenges

In addition to creating a beautiful extension of your home, updating your outdoor areas can help you problem solve. Below are a few ways in which bringing a hardscape haven to your yard can help you overcome some classic challenges.

---

### **Up Your Level of Curb Appeal**

Not only will you be happy each time you come home to a new and improved facade, but hardscapes tend to provide excellent ROI when it's time to sell.

### **Help Hide Unsightly Objects**

A strategically placed garden wall can transform a view from ugly to enlightening.

### **Create Usable Space from Uneven Ground**

A retaining wall will help create the extra square footage you desire.

### **Build a Private Oasis**

Hardscapes and softscapes can blend together to create the privacy you crave.





# 4

## Pick Your Priorities & Establish Phases

While we'd all like to have unlimited budgets to create our dream space, unfortunately dreams are not reality.

As you work with your contractor to narrow the scope of your project, you might have to pick your top priorities to execute right away -- and phase out the rest.

Because you've started with the end in mind; however, you can save yourself money and headaches in the long run. For instance:

- If you know you'll eventually want to add a kitchen to your patio plan, running the utilities up front can save you costly work down the road.
- If you start with a walkway to your front door that will eventually connect to your driveway, choosing a paver rated for vehicular traffic is a smart choice.
- When the project is planned in advance, each new phase will complement the previous one and avoid complications.



# 5

## Select Your Style

If you know the general feel you're looking for, your contractor can help you select the right products to execute your plan. If you pick products you like without a vision for the project as a whole, you might end up with a disjointed end result. Use these curated landscape design styles to select your style and help guide your contractor in the right direction!



TIMELESS



CONTEMPORARY

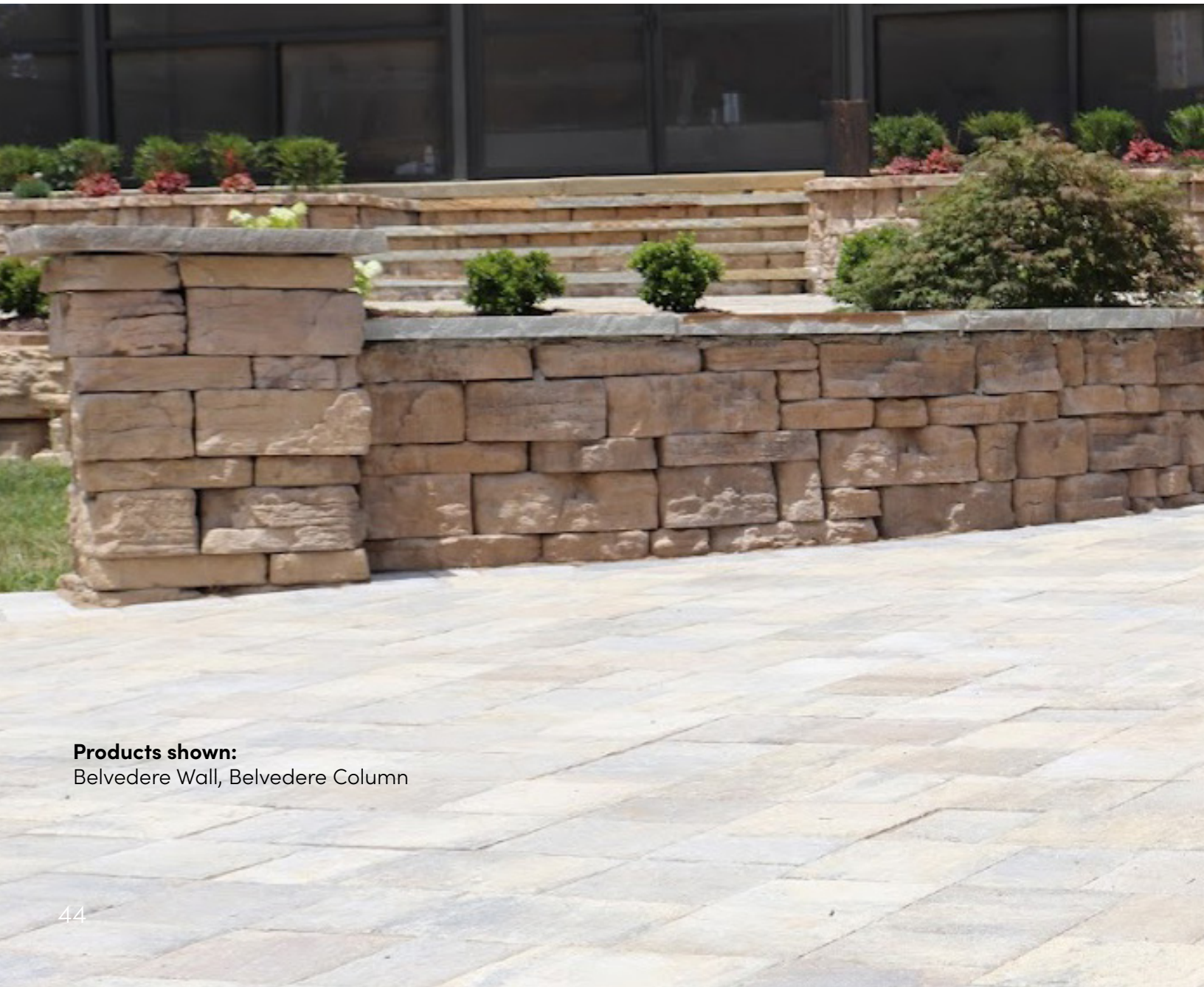


RUSTIC



# TIMELESS

A combination of natural tones and classic patterns create a traditional look, cultivating a space to share memories and enhance relationships. Generations to come will continue to bask in the magnificent haven that is created using the Timeless landscape design style.



**Products shown:**  
Belvedere Wall, Belvedere Column



Products shown:  
Grand Ledge



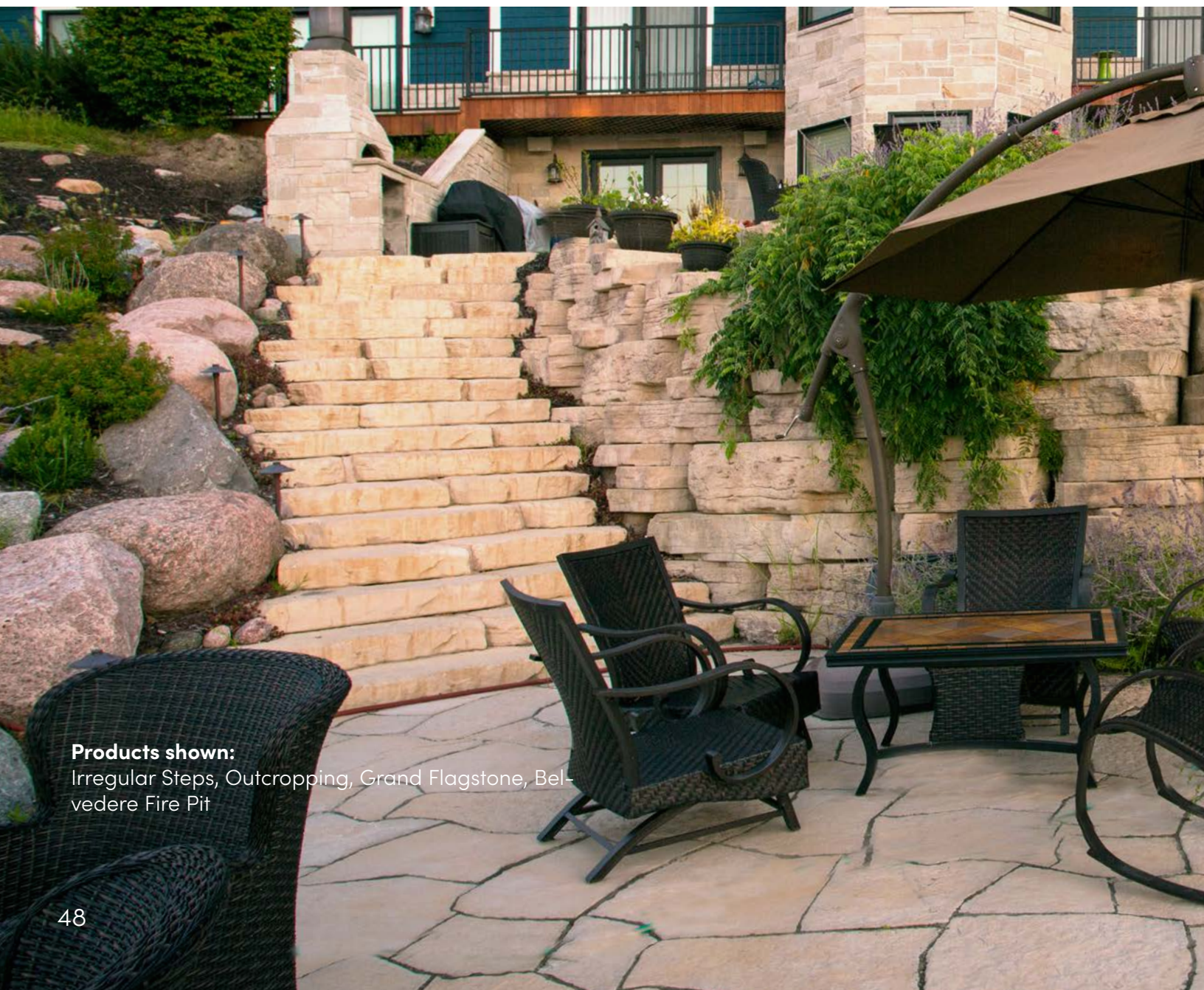
# CONTEMPORARY

Sleek and dashing minimalist designs can take a space -- big or small -- to a new level of sophistication. With calm tones and deep contrasts, the Contemporary landscape design style can provide anyone who enters your oasis a soulful experience.



# RUSTIC

The Rustic landscape design style brings nature and concrete together harmoniously. By incorporating heavily stratified edges, live textures, and dark tones, you'll lay the framework for outdoor fun whether you're at the farmhouse, the cabin...or even your suburban backyard.



**Products shown:**  
Irregular Steps, Outcropping, Grand Flagstone, Belvedere Fire Pit







Products shown:  
Kodah Wall



# INSTALL

*Bring the vision to fruition*

Once you've signed the contract, it will still be a while before you're enjoying your new space. Patience is key, as things will probably look worse before they look better. But, it's all part of the process to proper installation.

# HOW IT WORKS

## Prep

*Aka the ugly phase*

Your contractor and crew will quite often have to break things down before they can build them back up. Excavators, exposed dirt, and piles of gravel can be ugly to look at, but they're pivotal to the site preparation process. Take a deep breath and know that everything will be put back together even better than it was before.



## Work

*Where the magic happens*

This is often the most exciting phase of the project because you can see your new space taking shape. The progress at the end of each day is worth the early morning construction noise and a crew full of strangers in your yard. All your preparation is coming to fruition before your eyes!



## Landscaping

*The finishing touches*

Even when your hardscape elements are installed, there's still the finishing touches. Landscaping will be the last portion of your project before it's ready for you to break out the patio furniture and enjoy the full splendor of your new space!



## Maintenance

*Long-term cleaning and care*

When it's all said and done, it's sometimes not really all said and done. If you're not keen on maintaining your space by doing things like sealing your patio, be sure to ask upfront if your contractor will help with the long-term care of your new space.





**Products shown:**  
Outcropping



**Products shown:**  
Outcropping, Belvedere Fire Pit, Irregular Steps



# ENJOY

*Linger with loved ones*

While the whole process can seem arduous and drawn out, by taking the time up front you'll get exactly what you want in the end.

Rosetta Hardscapes helps you get the look of natural stone in an easier to install package, which means you won't have to settle for something less than you desire.

By not having to settle, you'll surely enjoy every moment in your new outdoor space, lingering with the ones you love.



# PRODUCT GLOSSARY

*Colors vary by region. Contact your local manufacturer to see local color options.*

## PAVERS & SLABS

Grand Flagstone



Dimensional Flagstone



Superior Steps



## LANDSCAPING WALLS

Outcropping



Grand Ledge



Belvedere



Kodah



Heartwood Wall





## STEPS & WALKWAYS

Irregular Steps



Dimensional Steps



## FIRE FEATURES

Belvedere Fire Pit Kit



Kodah Fire Pit Kit



## ACCESSORIES

Bullnose Coping



Belvedere Coping



Dimensional Coping



Column Caps



# COLOR SWATCHES

## BELVEDERE WALLS & BELVEDERE FIRE PIT



SADDLE MOUNTAIN (SM)



SENECA BLEND (SB)

## GRAND LEDGE



SADDLE MOUNTAIN (SM)



SENECA BLEND (SB)

## OUTCROPPING WALLS



SADDLE MOUNTAIN (SM)



SENECA BLEND (SB)

## BELVEDERE COPING



SADDLE MOUNTAIN (SM)



SENECA BLEND (SB)

## KODAH WALLS & KODAH FIRE PIT



SADDLE MOUNTAIN (SM)



SENECA BLEND (SB)

## HEARTWOOD



TAUPE (TP)



CHARCOAL (CH)

GRAND FLAGSTONE



SADDLE MOUNTAIN (SM)



SENECA BLEND (SB)

SUPERIOR STEPPERS



SADDLE MOUNTAIN (SM)



SENECA BLEND (SB)

DIMENSIONAL  
FLAGSTONE



SADDLE MOUNTAIN (SM)

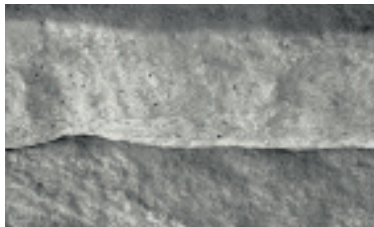


SENECA BLEND (SB)

IRREGULAR &  
DIMENSIONAL STEPS

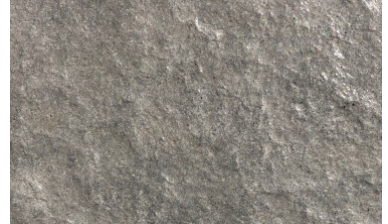


SADDLE MOUNTAIN (SM)



SENECA BLEND (SB)

DIMENSIONAL COPING,  
COLUMN CAPS, &  
BULLNOSE COPING



CHARCOAL (CH)



TAUPE (TP)

We want you to feel comfortable and confident when starting your project. That's why we make sure you have the resources you need to get the job done right. Everything we make, we back with a lifetime limited warranty.

---

# ROSETTA BY PEERLESS LIFETIME LIMITED WARRANTY

---

Rosetta Hardscape products as manufactured by Peerless are backed by a lifetime limited warranty from the manufacturer to the original end user, for products used in residential applications. This assurance of product quality is applicable where products have been correctly installed to manufacturer's specifications. Any properly installed hardscape material manufactured by Rosetta of Michigan that deteriorates due to the concrete in the product not meeting the design strength specification will be replaced by the manufacturer. The following items are not covered by this warranty: color variances and the appearance of surface stains resulting from chemical reactions such as efflorescence or differential curing; damage caused by installation; deterioration caused by de-icing salts or fertilizers; damage resulting from sub-grade settlement or movement, hairline cracks that do not affect the structural performance of the product, spalling of less than three percent of the surface area, contact with chemicals or paint, discoloration due to airborne contamination, staining, oxidation, or improper sealing. Products purchased must be registered with the manufacturer within 60 days of end user's purchase for warranty to be valid. You may register your project at **[PeerlessHardscapes.com/Warranty](https://PeerlessHardscapes.com/Warranty)**.

All warranty claims must be made prior to the removal or disposal of the defective product. Warranty claims will be reviewed by a company representative and may require samples of defective product for analysis. Warranty does not include removal, installation, or transportation to replace the material. Warranty is not transferable and is extended to the original end user only. Proof of purchase is required.

Please note:

- Actual colors may vary from the color swatches Shown in this book. Final color selection should be made from actual color samples, which are available from your local dealer.
- For the most natural appearance, install products from multiple pallets simultaneously. This will create a more blended, natural look.

**For additional questions please contact us at (800) 642-3054**

# ADDITIONAL INFORMATION

---

## **COLOR:**

We at Rosetta by Peerless, along with our media partners, do our best to produce print and digital materials that accurately reflect the true shades and tones of our product. However, we cannot guarantee perfect color matching for project photos, color swatches, or other picture representations.

Dye is mixed into the raw materials for all Rosetta Hardscapes products to intentionally produce subtle shades and color variations throughout each block or paver. Therefore no product seen in a photograph will be precisely duplicated. We recommend installing Rosetta with materials picked from multiple pallets for optimum color blending.

## **EFFLORESCENCE:**

Efflorescence is a naturally occurring, chalky, white residue commonly found on concrete surfaces. The presence of efflorescence in no way degrades the integrity of any product. It can usually be removed with efflorescence cleaners and often washes away over time. Rosetta by Peerless does not cover the presence of efflorescence under warranty.

## **CLEANING AND SEALING:**

Rosetta takes pride in producing the most natural looking manufactured hardscape products. The process to produce a natural looking product requires the use of release agents, which some remnant may remain on the surface of the product. When initially installing Rosetta products it is recommended to clean the product and apply a sealer to protect the product from spills or stains. Always use a high quality sealer specifically formulated for wet-cast concrete.

## **POLYMERIC HAZE:**

Improper installation of hardscape materials or use of certain landscaping sands may result in the presence of polymeric haze. This discoloration can potentially mute the vibrant colors of concrete products. Its incidence is not indicative of the quality of the product and it should not be considered a source of concern for the product's durability. Because Rosetta by Peerless cannot regulate selection or installation of aftermarket accessory materials, we do not warranty against the presence of polymeric haze. In general, polymeric haze can be cleaned and washes away over time.

## **HEAVY EQUIPMENT:**

The broad surface dimensions of Rosetta's slab products are not engineered for vehicular traffic and compaction equipment.

## **WINTER CARE:**

All metal snow shovels and snow blower blades have the potential to damage concrete pavers. All snowplows, snow blowers and shovels used to clear Rosetta products of snow should use plastic blades or guards. De-icing salts will damage concrete and should not be used with Rosetta products. Rosetta does not cover damage done by snow removal, de-icing, or improper loading under warranty.

A photograph of an outdoor patio area. In the foreground, there is a large, dark green evergreen tree on the left and a bush of bright pink flowers. To the right, there are stone steps leading up to a brick wall. Behind the wall is a wicker outdoor sofa with white cushions and several patterned and solid-colored pillows. A large window in the background shows the interior of a house with a staircase and a light fixture. The overall scene is lit with warm, ambient light, suggesting dusk or dawn.

ros

B Y P E E



ETTA®

E R L E S S



ROSETTA®

B Y P E E R L E S S