

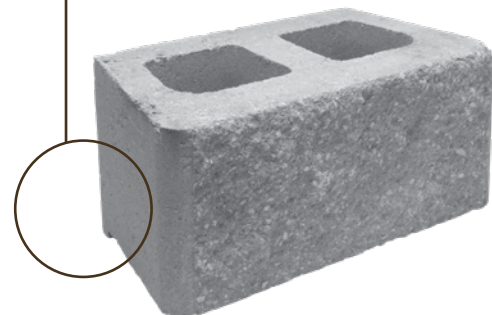
PRODUCT INFORMATION



Architects, engineers and contractors choose the Diamond Pro retaining wall system to create flexible, cost effective solutions for a broad range of commercial and residential retaining wall projects. The Diamond Pro[®] 9D is a lightweight solution for segmental retaining walls, while the rear-lip block makes installation fast and accurate.

- All system components are standard-split in-line
- Rear lip locators easily establish a uniform wall batter
- A matching cap completes the system
- Face styles available are Straight, Beveled, and Stone Cut
- Ideal solution for residential and light commercial projects

No pins. No mortar. No misalignments.
Rear-lip block, invented by Anchor Wall Systems, makes installation fast and accurate.



PRODUCT INFORMATION



Visit anchorwall.com for installation instructions.

AVAILABLE FACE STYLES



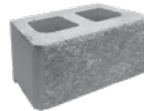
STRAIGHT



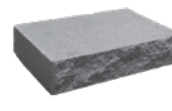
BEVELED



STONE CUT



Face Unit



Cap Unit



Corner Unit

Units	Face Unit	Cap Unit	Corner Unit
Approximate Dimensions	8" x 18" x 9"	4" x 18" x 12"	8" x 18" x 9"
Approximate Weight	61 lbs.	47 lbs.	101 lbs.
Coverage	1 sq. ft.	1.22 ln. ft.	1 sq. ft. (front) / .5 sq. ft. (end)
Setback/System Batter	1"/7.1°	N/A	N/A

© 2019 Anchor Wall Systems. The logos, slogans, product names and other trademarks shown in this document are trademarks of Anchor Wall Systems (AWS). The wall system components shown and described are designed by AWS and are made and sold by independent manufacturers under license from AWS.

Anchor Wall Systems, 5909 Baker Road, Suite 550, Minnetonka, MN 55345

AWS18-1048 04/19